

Library books every
Tuesday



This Week's News



The children have been busy with lots of Christmas crafts and play practice.

Christmas fair

PTA donations for the Christmas fair please?

Hamper items

Books, popcorn, hot chocolate, ketchup, mayo, mustard, jam, brandy butter, crackers

Cakes - brought in on the day

The Christmas fair will be on **Wednesday 30th November**. 5-7pm

Hot dogs, raffle, hot chocolate and lots of stalls.

If you would like to know more, please have a look at the Eyton PTA Facebook group.

*30th November non school
uniform day. Please can
the children bring in something
chocolatey?*

Dates for your diary

29th November children are welcome to come into school in their Wales football/rugby shirts. Please bring a donation of £for school funds

30th November non school uniform day. Please can the children bring in something chocolatey?

8th December Christmas jumper and Christmas dinner day.

13th December Christmas plays.

21st December school breaks for Christmas.

Christmas plays

The school plays will be on Tuesday 13th December. An afternoon and evening performance. Times to be confirmed.

Can you help?

Would anyone be interested in starting a toddler group in the school hall?

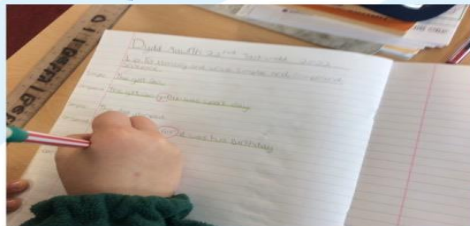
Could someone spare some time to fix the school notice board outside of school?

Hire of the school hall

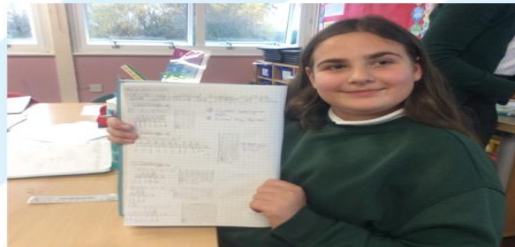
If you would like to hire the hall for birthday parties etc. Please see the letting policy on the school webpage. You are welcome to hire the hall and cater for your party or you can choose one of our party packages.



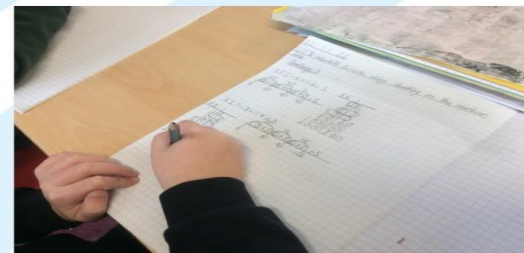
DOSBARTH GYLYNDWR



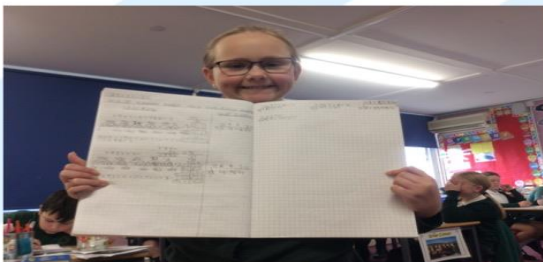
We practised writing compound sentences.



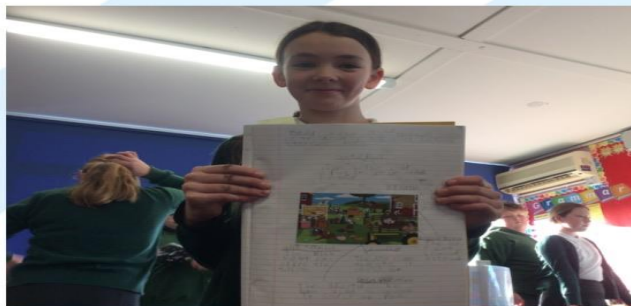
We did lots of dividing in maths.



We did some chunking on the number line.



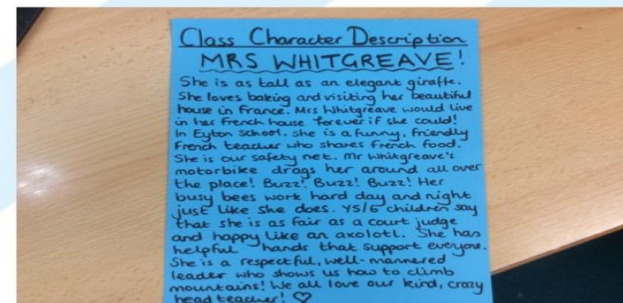
We did short division.



We learned how to write using descriptive language tools like metaphors, similes, personification and hyperbole.

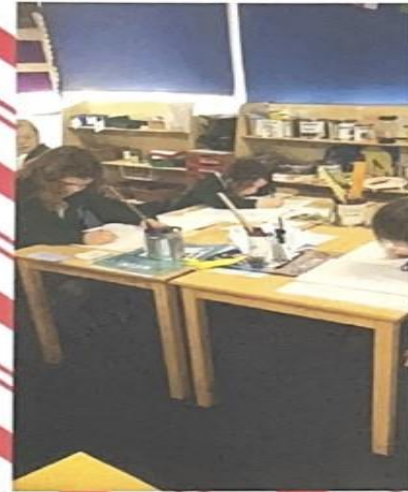
Our Class Character Description... Mrs Whitgreave!			
Appearance	Feelings	What they do	What others say about them
well	happy, jolly	laughs	great headteacher
friendly face	respectful	plays musical instruments	children love to when she gives them French food
like a warm blanket	easy	reminds them the school is there for them	children love to when she gives them French food
she	helpful	likes her dog	children love to when she gives them French food
she always has a smile	fair	likes her cat	children love to when she gives them French food

We used lots of descriptive language tools to write a class character description of Mrs Whitgreave!



PIC • COLLAGE

YSGOL BUDDUG



In Topic we have been looking at diversity and learning differences

In science we have designed circuits.

In literacy we are thinking about feelings.

We have been counting money in maths.



Made by Charlie and Leo.





Save the Children
**CHRISTMAS
JUMPER DAY**

-
- Does your child have a Christmas jumper they no longer wear?
- Would your child like to swap for a different Christmas jumper for only £1?
- Join our Christmas jumper swap shop.
- Bring to school your old Christmas jumper and take home a different one.
- Please send any Christmas jumpers in by Friday 2nd December.
- Name_____
- New size required_____

NOVEMBER.

WIN!

1st - No. 15 - Jensen's Nain

2nd - No 1 - Harry & Ellie

3rd - No 83 - Susan Evans

The winners were drawn by some Foundation

CHRISTMAS FAYRE

30TH NOVEMBER

5-7PM



TOMBOLA

CAKES



Christmas



LOTS OF STALLS



HOT DOGS

RAFFLE

HOT CHOC